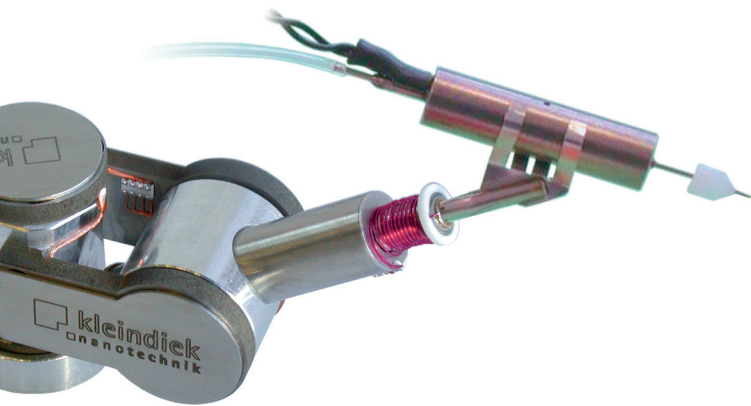


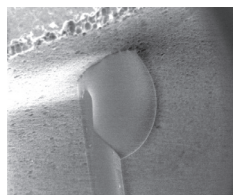
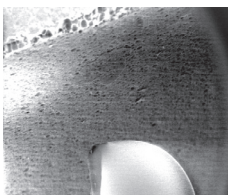
# MIS-EM Microinjector

The MIS-EM is a micro-valve plug-in system for the MM3A-EM micromanipulator. It enhances your system by allowing you to inject microscopic amounts of liquids and gases onto your samples in low-vacuum SEM.



The unique combination of precision manipulation and controlled microinjection has attracted a lot of interest in the MIS-EM since its launch. In addition to ground-breaking experiments with fluids, it is also possible to work with non-condensing gases.

The plug-in tool can be quickly and easily fitted to your existing MM3A-EM micromanipulator.



## Applications

- Food – sugar coating reactions
- Textile – swelling of fibres
- Pharma – chemical reactions
- Building – cement testing
- Biology – regenerative medicine
- Metallurgy – metal corrosion

## Technical specifications

- Microvalve length 31.4 mm
- Microvalve diameter 5.6 mm
- Inlet diameter 0.6 mm
- Outlet outer diameter 0.5 mm  
Outlet inner diameter 0.25 mm
- Weight 3 g
- Smallest drop size 100 µm\*
- Temperature range 273 K to 353 K
- Wetted materials  
EPDM seal (ethylene propylene),  
PEEK polymer (polyaryletheretherketone),  
PPS (polyphenylene sulphide),  
stainless steel, epoxy

*\* Measurement made using water; drop size depends on fluid viscosity*

## Further information



**Kleindiek is proudly represented in Australia and New Zealand by AXT Pty. Ltd.**  
1/3 Vuko Pl., Warriewood  
NSW 2102 Australia  
T. +61 (0)2 9450 1359 F. +61 (0)2 9450 1365  
W. [www.axt.com.au](http://www.axt.com.au) E. [info@axt.com.au](mailto:info@axt.com.au)

