



Geno/Grinder® & MiniG® Accessories

SPEX® SamplePrep®

Table of Contents

TRAYS.....	3
GRINDING BALLS AND DISPENSERS.....	3
GRINDING BEADS.....	4
GRINDING CYLINDERS.....	5
TITER PLATES AND CAP-MATS.....	5
VIALS AND VIAL SETS.....	7
PRE-LOADED 2 ML DISRUPTION TUBES.....	8
HOLDERS.....	10
MINIG® VIAL HOLDERS.....	10
GENO/GRINDER® VIAL HOLDERS.....	11
PRE-LOADED DISRUPTION TUBES REFERENCE TABLE.....	12
KRYO-TECH® ACCESSORIES.....	13
EXTRACTOR.....	13
CRYO-BLOCKS.....	13
MINIG® CRYO-BLOCKS.....	13
GENO/GRINDER® CRYO-BLOCKS.....	14
VIAL AND TITER PLATE CAPACITY TABLE.....	16
VIALS, JARS, AND TUBES REFERENCE TABLE.....	17
OPERATING LOAD RESTRICTIONS.....	18
USING THE GENO/GRINDER® FOR BEAD BEATING.....	18
PROTOCOLS.....	18

CONTACT US

SPEX SamplePrep

65 Liberty Street
Metuchen, NJ 08840 USA
Tel: +1 (732) 623-0465
Toll Free: +1 855-GET-SPEX (855-438-7739)
sampleprep@spex.com
www.spexsampleprep.com



AXT PTY LTD

Authorised Distributor
SPEX SamplePrep
Australia & New Zealand

1/3 Vuko Place
Warriewood
NSW 2102 Australia

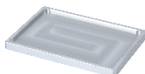
+61 (0)2 9450 1359
axt.com.au
info@axt.com.au

TRAYS



2189T Nesting Tray Set Geno/Grinder®

Nesting trays used to stack titer plates vertically in the adjustable clamp (#2011). Set comes with two nesting mid-plates and one bottom plate.



1690T Nesting Tray for MiniG®

Nesting trays used to stack titer plates vertically in the MiniG® adjustable clamp (#1690).

GRINDING BALLS AND DISPENSERS

Stainless steel and Zirconia balls are useful for grinding large or tough samples. The choice of ball size should be determined based on the sample material and the size of the grinding vial or titer plate. After use, the grinding balls can be discarded or cleaned for re-use.



2150 Grinding Balls, 5/32 in. (4 mm)

Made of 440C stainless steel. Used with Grinding Ball Dispenser (#2100); 96-well titer plates (#2200, #2210). Sold in bags of 5,000.



2151 Grinding Balls, 4/32 in. (3 mm)

Made of 440C stainless steel. Used with 96-well titer plate (#2200, #2210); polypropylene microfuge tube (#2300-500E) or reinforced polypropylene tube (#2310). Sold in bags of 100.



2154 Grinding Balls, 1/8 in. (6.35 mm)

Made of 440C stainless steel. Used with reinforced polypropylene tube (#2310).



2155 Grinding Balls, 3/8 in. (9.5 mm)

Made of 440C stainless steel. Used with 24-well titer plate (#2230); vial (#2241-PC) or frosted vial. Sold in bags of 100.



2156 Grinding Balls, 7/16 in. (11 mm)

Made of 440C stainless steel. Used to grind large or tough sample(s) with 24-well titer plate (#2230) or pre-cleaned vial set (#2250). Sold in bags of 100.



2157 Grinding Balls, 1/2 in. (12.7 mm)

Made of 440C stainless steel. Used to grind large or tough sample(s) with a thick-walled polycarbonate jar (#2254) or cryogenic grinding vial (#2255). Sold in bags of 100.



2158 Grinding Balls, 25/32 in. (20 mm)

Made of 440C stainless steel. Used with polycarbonate vial only (#2253). Sold in bags of 100.



2186 Zirconia Grinding Balls, 15/64 in. (6 mm)

Made of zirconia. Used with reinforced polypropylene tube (#2310). Sold in bags of 1,000.



5005B Grinding Balls 5/16 in. (7.9 mm)

Made of 440C stainless steel. Used with a thick-walled polycarbonate jar (#2254).



5006B Grinding Balls 5/16 in. (7.9 mm)

Made of tungsten carbide. Used with a thick-walled polycarbonate jar (#2254).



6133B Grinding Balls 9/16 in. (14 mm)

Made of chrome steel. Used with reinforced vial only (#6133PC-T).



2100 Grinding Ball Dispenser

Simultaneously dispenses one 5/32 in. (4 mm) steel grinding ball (#2150) into each well of a standard 96-well titer plate (#2200, #2210).



2110M-12 Magnetic Tips

Converts micropipette dispensers into pin magnets for removing steel grinding balls from deep-well titer plates. Sold in packs of 12 or 96 (#2110M-96).

GRINDING BEADS

Molecular Biology Grade Grinding Beads are treated to inactivate contaminating enzymes and have been tested accordingly. Low Binding Grinding Beads are coated to reduce non-specific binding of nucleic acids and proteins and are used for lysing dilute samples of cells. Acid Washed Grinding Beads are treated to remove fine particles and contaminants. Contact us for detailed instructions.



Silica Grinding Beads

Acid washed silica grinding beads. Available in sizes 800-1000 µm (#2160) and 400-660 µm (#2165). 200 g bottle.



Low Binding Silica Beads

Acid washed and chemically treated to keep samples from binding to titer plate wells. Available in sizes 800 µm (#2162), 400 µm (#2167), 100 µm (#2168).



2166 Silica Grinding Beads Molecular Biology Grade, 400-600 μ m

Acid washed RNase/DNase-free treated silica beads. 200 g bottle.



2180 Zirconia Grinding Beads, Molecular Biology Grade, 200-400 μ m

Acid washed RNase/DNase-free treated zirconia beads. 250 g bottle.



Low Binding Zirconia Beads

Acid washed and chemically treated to keep samples from binding to titer plate wells. Available in sizes 100 μ m (#2181) and 200 μ m (#2182). 250 g bottle.



2302-30 Zirconium Beads, 3 mm

Acid washed zirconium beads, 300 g bottle.

GRINDING CYLINDERS

Our chemically inert ceramic cylinders are specifically designed for the QuEChERS method which is used to extract pesticide residues or other organic contaminants from fruits, vegetables, meat or seafood. The angle-cut ends help the cylinders to shear the sample matrix and break up salt agglomerates during processing, reducing extraction time and resulting in a thorough extraction of analytes into the solvent. Typically, 2 cylinders are used per sample vial.



Ceramic Grinding Cylinder

Ceramic grinding cylinder with angle-cut ends. Sold in bags of 100. Available in large 3/8 in. x 7/8 in. (#2183) for use with standard 50 mL centrifuge tubes, medium 5/16 in. x 5/8 in. (#2184) for use with standard 15 mL centrifuge tubes and small 5/32 in x 5/16 in. (#2185) for use with standard 5 or 15 mL centrifuge tubes.

TITER PLATES AND CAP-MATS

While most titer plates can be used in the Geno/Grinder, we carry sturdy titer plates that have been tested extensively with various samples and resist perforation by steel grinding balls even at high clamp speeds. They can be used for many applications including sample libraries, mother-to-daughter automated plate pipetting, large sample dilutions and cell suspensions. Suitable for RNA extraction when used with 2600 Cryo-Station. Titer plates are made of polypropylene, with alphanumeric marks for well identification. Cap-Mats seal titer plate wells, preventing spills and well-to-well contamination. Rugged, silicone rubber Cap-Mats may be sterilized and re-used.



2200–100 96-Well Titer Plate, Square Wells

Square 2.4 mL wells with a working capacity of 2.0 mL. Used with the Grinding Ball Dispenser (#2100). Sold as a case of 100 or single (#2200). This titer plate is recommended for dry grinding.

**2201-10 Cap-Mat**

Sealing mats only for the 96-well titer plate (#2200). Sold in packs of 10 or single (#2201).

**2210-100 96-Well Titer Plate, Round Wells**

Round 1.0 mL wells, rugged polypropylene, alphanumeric marks for well identification. Used with the Cryo-Adapter (#2650) which is inserted from the bottom in gaps between wells to keep plates and samples chilled to preserve RNA or proteins for extraction. Sold in packs of 100 or single (#2210).

**2211-10 Cap-Mat**

Sealing mats only for the 96-well titer plate (#2210). Tough silicone rubber, prevents leaks and cross-well contamination. May be sterilized and reused. Sold in packs of 10 or single (#2211).

**2220-100 48-Well Titer Plate**

Rectangular 5 mL wells with a working capacity of 2 mL per well. Use with steel grinding balls (#2150). Sold as a case of 100 or single (#2220).

**2221-10 Cap-Mat**

Sealing mats only for the 48-well titer plate (#2220). Sold as a case of 10 or single (#2221).

**2230-100 24-Well Titer Plate**

Square 10 mL wells with a working capacity of 4 mL per well. Use with steel grinding balls (#2155, #2156). Sold as case of 100 or single (#2230).

**2231-10 Cap-Mat**

Sealing mats only for the 24-well titer plate (#2230). Tough silicone rubber, prevents leaks and cross-well contamination. May be sterilized and reused. Sold as case of 10 or single (#2231).

VIALS AND VIAL SETS

Vial sets are an alternative to titer plates. Vials can be filled and sealed individually, and the larger vials can hold bigger samples than titer plates. Replacement vials and steel balls can be purchased separately.



2240–PC 5 mL Polycarbonate Vial Set

Set of 24 pre-cleaned vials (#2241-PC) with screw-on polyethylene cap ½ in. diameter x 2 in. long (12.7 mm x 50.8 mm). Pre-loaded with with one 3/8 in. (9.5 mm) stainless steel grinding ball (#2155). Used with the Cryo-Block (#2662) and the Vial-Holder (#2191). Grinding load per vial 1.5 mL. Sold as a case of 10.



2240–PEF 5 mL Pre-Cleaned Frosted Polyethylene Vial Set

Set of 24 vials with screw-on polyethylene cap ½ in. diameter x 2 in. long (12.7 mm x 50.8 mm). Pre-loaded with one 3/8 in. (9.5 mm) stainless steel grinding ball (#2155). Can also be used with the Cryo-Block (#2663) and the Vial-Holder (#2191). Grinding load per vial 1.5 mL. Sold as a case of 10.



2241–PC 5 mL Polycarbonate Vial

Polycarbonate vial with screw-on polyethylene cap. 1/2 in. diameter x 2 in. long (12.7 mm x 50.8 mm). Holds one 3/8 in. (9.5 mm) stainless steel grinding ball (#2155). May be used with the Cryo-Block (#2662) and the Vial-Holder (#2191). Grinding load per vial 1.5 mL. Sold as a case of 240.



2241–PEF-200 5 mL Frosted Polyethylene Vial

Frosted polyethylene vial with screw-on polyethylene cap. ½ in. diameter x 2 in. long (12.7 mm x 50.8 mm). Holds one 3/8 in. (9.5 mm) stainless steel grinding ball (#2155). May be used with the Cryo-Block (#2663) and the Vial-Holder (#2191). Grinding load per vial 1.5 mL. Sold in units of 200.



2248 12 oz. Jar

12 oz. (355 mL) polyethylene terephthalate (PET) jar. Not pre-cleaned. Sold in packs of 8.



2250 15 mL Pre-Cleaned Short Polycarbonate Vial Set

Set of 5 pre-cleaned vials (#2250) with screw-on polyethylene cap. 1 1/8 in. diameter x 1 2/3 in. long (29 mm x 42 mm). Pre-loaded with two 7/16 in. (11 mm) stainless steel grinding balls (#2156). May be used with the Cryo-Block (#2660) and the Vial-Holder (#2193). Grinding load per vial 1.5 mL. Sold as a case of 10.



2251-PC 15 mL, Short Vial Polycarbonate

Polycarbonate vial with screw-on cap. 1 1/8 in. diameter x 1 2/3 in. long (29 mm x 42 mm). Holds two 7/16 in. (11 mm) stainless steel grinding ball (#2156). May be used with the Cryo-Block (#2660) and the Vial-Holder (#2193). Pre-cleaned with grinding load per vial 1.5 mL. Sold as bag of 100.



2252-PC-30 15 mL Tall Vial Polycarbonate

Polycarbonate round-bottomed centrifuge tube vial with screw-on polyethylene cap. 5/8 in. diameter x 4 3/4 in. long (16 mm x 120.65 mm). Holds one 3/8 in. (9.5 mm) stainless steel grinding ball (#2155). Grinding load per vial 6 mL. Sold as a pack of 30.



2253-PC-48 50 mL Polycarbonate Vial

Polycarbonate round-bottomed centrifuge tube vial with screw-on polyethylene cap. 1 1/8 in. diameter x 4 1/2 in. long (29 mm x 114.3 mm). Holds two 7/16 in. (11 mm) stainless steel grinding balls (#2156). Grinding load per vial 6 mL. Sold as a pack of 48.



2254 Thick-Walled 75 mL Jar Set Polycarbonate

Polycarbonate body with screw-on cap and rubber gasket. Supplied with two 1/2 in (12.7 mm) stainless steel balls (#2157). Jar size 2 in. diameter x 3 in. long (51 mm x 76.2 mm). Sold in pairs.



2258 25 oz. Jar

25 oz. (750 mL) polyethylene terephthalate (PET) jar. Not pre-cleaned. Sold in packs of 4.



6133PC-T Polycarbonate Vial 12 mL

Reinforced polycarbonate vial with slip-on cap. Holds one (14 mm) stainless steel grinding ball (#6133B). Not pre-cleaned. Grinding load per vial 1 - 5 mL. Not recommended for liquids. Sold in units of 100.

PRE-LOADED 2 ML DISRUPTION TUBES

Ideal for fast and simple setup—add samples and you're ready to go. Vials are self-standing, making it easier to add samples, and are prefilled with your choice of molecular biology grade silica beads, acid washed silica or zirconia beads, silica beads or steel balls. Approx. grinding load per vial is 0.5–1.0 mL.



2300-500E

2 mL Polypropylene microfuge tube. Sold as a pack of 500.



2301-100MB

2 mL microfuge tube with screw-cap, prefilled with 1200 mg of 100 µm molecular biology grade silica beads. Sold in packs of 100.



2302-100AW2

2 mL microfuge tube with screw-cap, prefilled with 600 mg of 100 µm acid washed zirconia beads. Available as 200 µm (#2302-200AW). Sold in packs of 100.



2302-1000AW

2 mL microfuge tube with screw-cap, prefilled with 1.0 mm acid washed zirconia beads. Sold in packs of 100.

**2302-1400AW**

2 mL microfuge tube with screw-cap, prefilled with 1.4 mm acid washed zirconia beads. Sold in packs of 100.

**2302-1700AW**

2 mL microfuge tube with screw-cap, prefilled with 1.7 mm acid washed zirconia beads. Sold in packs of 50.

**2302-3000AW**

2 mL microfuge tube with screw-cap, prefilled with 3 mm acid washed zirconia beads. Sold in packs of 50.

**2302-6000AW**

2 mL microfuge tube with 6 mm Ceria Stabilized Zirconia beads. For grinding tough plant samples. Sold as a pack of 100.

**2303-MM1**

2 mL microfuge tube with screw-cap, prefilled with garnet and zirconia satellites. Sold in packs of 100.

**2303-MM2**

2 mL microfuge tube with screw-cap, prefilled with 800 μ m and 1.4 mm acid washed zirconia beads. Sold in packs of 100.

**2303-MM3**

2 mL microfuge tube with screw-cap, prefilled with 100 μ m silica beads, 1.4 mm zirconia beads and a 4 mm acid washed silica bead. Sold in packs of 100.

**2304-100AW**

2 mL microfuge tube with screw-cap, prefilled with 100 μ m acid washed silica beads. Sold in packs of 100.

**2304-400AW**

2 mL microfuge tube with screw-cap, prefilled with 400 μ m acid washed silica beads. Sold in packs of 100.

**2304-800AW**

2 mL microfuge tube with screw-cap, prefilled with 800 μ m acid washed silica beads. Sold in packs of 100.



2305-2800SS

2 mL microfuge tube with screw-cap, prefilled with 2.8 mm stainless steel grinding balls. Sold in packs of 50.



2310 2 mL Reinforced Tube

Reinforced polypropylene, Self-standing 2 mL microfuge tube with screw-on polyethylene cap. 25/64 in. diameter x 1 27/32 in. long (10 mm x 47 mm). Grinding load per tube 1 mL. Sold in packs of 200.

HOLDERS

The Holders are designed to hold vials securely in place on the 2010 Geno/Grinder® or MiniG® during processing. They are lightweight and can also be used on the benchtop and to transport samples within the laboratory.

MINIG® VIAL HOLDERS



1680 2 mL Foam Holder for MiniG®

Rugged foam block holds 24 standard 2 mL tubes (#2310, #2300-500E). Sold as a pair.



1681 5 mL Block

Rugged Foam Block Holds 24 standard 5 mL tubes (#2241-PEF-200, #2241-PC). Sold in pairs.



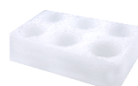
1685 15 mL Foam Holder for MiniG®

Rugged foam block holds 12 standard 15 mL centrifuge tube (#2252-PC-30).



1686 50 mL Foam Holder for MiniG®

Rugged foam block holds six standard 50 mL centrifuge tube (#2253-PC-48).



1687 Foam Holder

Foam holder for 15 mL polycarbonate jars (#2251-PC), holds 6 vials.



1688 Foam Holder

Foam holder for 75 mL polycarbonate jars (#2254), holds 2 jars.

GENO/GRINDER® VIAL HOLDERS



2191 5 mL Vial Holder

Thick, rugged foam block holds 48 standard 5 mL centrifuge tubes. Used with Polycarbonate and Frosted Polyethylene Vial (#2241-PEF-200, #2241-PC).



2193 15 mL Vial Holder

Holds 12 x 15 mL polycarbonate vials (#2250, #2251-PC).



2196-16-PE Holder for 50 mL Centrifuge Tubes

Thick, rugged foam block holds 16 standard 50 mL centrifuge tubes (#2253-PC-48).



2197 Holder for 15 mL Centrifuge Tubes

Thick, rugged foam block holds 24 standard 15 mL centrifuge tubes (#2252-PC-30).



2198 Foam Holder for 75 mL Polycarbonate Jars

Thick, foam block holds six 75 mL thick wall Polycarbonate jars (#2254).



2198-24 -PE Foam

Holder for 12 mL Reinforced Polycarbonate Vial Holds 24 vials (#6133PC-T).



2257 Foam Holder

Thick, rugged polyethylene foam block holds up to sixteen cryogenic grinding vials (#2255).



2259 Holder for PET Jars

Foam holder for two 25 oz. (750 mL) polyethylene terephthalate jars (#2258) or four 12 oz (355 mL) polyethylene terephthalate jars (#2248).



2300 Holder for 2 mL Micro-centrifuge Tubes

Thick, rugged foam block holds 48 microfuge tubes (#2310, #2300-500E).

PRE-LOADED DISRUPTION TUBES REFERENCE TABLE

PART NUMBER	2 ML VIAL SET	DETAILS
2301-100MB	100 µm Silica Beads (1200 mg)	Economical bead for disrupting bacteria.
2302-1400AW	1.4 mm Zirconia Beads	Suitable for small tissue samples and biomass.
2303-MM1	Garnet & ZrO ₂ Satellites	General Sample Shredding.
2303-MM2	800 micron & 1.4 mm Zirconia Beads	Mycelium & Soft Leaves.
2303-MM3	100 micron Si, 1.4 mm Zr, & 4 mm Si	Biofilms & Plant Tissues.
2304-100AW	100 µm Silica Beads (600 mg)	Suitable for Bacteria.
2302-100AW2	100 µm Zirconia Beads (600 mg)	Zirconium beads are of higher density; excellent for bacterial disruption.
2304-400AW	400 µm Silica Beads	Size is ideal for yeasts such as Saccharomyces.
2304-800AW	800 µm Silica Beads	Size is suitable for molds and pollen.
2302-1000AW	1.0 mm Zirconia Beads	Beads are suitable to disrupt finer soils.
2302-1700AW	1.7 mm Zirconia Beads	Effective for larger tissue samples and fine plant materials.
2305-2800SS	2.8 mm Stainless Steel Grinding Balls	Most dense of all the grinding media, popular for their moderate cost. Good for tissues.
2302-3000AW	3.0 mm Zirconia Beads	Good for larger tissue samples. Excellent chemical resistance to organics.
2302-6000AW	6 mm Ceria Stabilized Zirconia Beads	Ideal for grinding tough plant samples.
2302-200AW	200 µm Zirconium Beads	Suitable for bacteria and small yeast (e.g. Pichia).

KRYO-TECH® ACCESSORIES

These accessories are used to chill samples to cryogenic temperature and to maintain temperature during grinding in the Geno/Grinder®. Additional products for liquid nitrogen handling, such as protective gloves (#6900) and portable dewars, can be found in the Freezer/Mill® section.



2189C Cryoplate (Geno/Grinder®)

The Cryoplate (#2189C) keeps sample lids cold during the grinding process. Used with Cryo-Block or Cryo-Adapter (#2650) for titer plates.



2255 Cryogenic Grinding Vial Pack

Used to grind tough materials (e.g. bone) at cryogenic temperatures. Used with the extractor (#2261). Package includes four sets of cryogenic vials, each with 1 cylinder, 2 end plugs, and 2 stainless steel balls (#2157). For use with the polyethylene foam holder (#2257) or the Cryo-Block (#2260). Sold in a pack of 4.



2600 Cryo-Station

The Cryo-Station holds temperature sensitive samples that must be kept chilled for cryogenic grinding, RNA, or proteins for extraction. It has an insulated jacket and can be filled manually or automatically with liquid nitrogen. The well of the Cryo-Station reaches liquid nitrogen temperatures quickly. Up to two Cryo-Blocks can be placed in the well to be chilled and kept cold prior to grinding. The well can also hold a chilled cutting board to prepare temperature sensitive samples.



2650 Cryo-Adapter for Titer Plates

Extruded aluminum insert for the 96-well titer plate (#2210). When inserted in titer plate and chilled in 2600 Cryo-Station, the Cryo-Adapter (#2650) keeps samples in titer plate cold during grinding, preserving RNA and proteins. Sold in pairs.

EXTRACTOR



2261 Extractor

Vial opener for the cryogenic grinding vial (#2255). Used to remove the End Plug from the center cylinders of the cryovial.

CRYO-BLOCKS

Aluminum Cryo-Blocks are designed to keep sample tubes or vials cold during processing. They can be pre-cooled in liquid nitrogen, dry ice or a freezer. Cryo-Blocks should always be used two at a time to balance the load in Geno/Grinder® Clamps.

MINIG® CRYO-BLOCKS



1660 2 mL Cryo-Block

Lightweight cryo-block for 2 mL vials with a hollow base and a lid to help the samples maintain cold temperature during processing. Holds 48 vials.



1665 5 mL Cryo-Block

Lightweight cryo-block for 5 mL vials with a hollow base and a lid to help the samples maintain cold temperature during processing. Holds 24 vials.



1666 Cryo-Block for 15 mL Centrifuge Tubes

Aluminum block that holds fifteen 15 mL round-bottom centrifuge tubes.



1667 Cryo-Block for 50 mL Centrifuge Tubes

Aluminum block that holds six 50 mL round-bottom centrifuge tubes.



1668 Cryo-Block for 15 mL Polycarbonate Vials

Aluminum block that holds six short polycarbonate vials (#2251PC).

GENO/GRINDER® CRYO-BLOCKS



2260 Cryo-Block for 2255 Vial

Aluminum block holds eight cryogenic grinding vials (#2255). Two Cryo-Blocks, allows 16 samples to run simultaneously. Sold in pairs.



2660 Cryo-Block for 15 mL Polycarbonate Vials

Aluminum block that holds six short polycarbonate vials (#2251PC). Sold in pairs.



2661 Cryo-Block for 15 mL Centrifuge Tubes

Aluminum block that holds fifteen 15 mL round-bottom centrifuge tubes. Sold in pairs.



2662 Cryo-Block for 5 mL Polycarbonate Vials

Aluminum block that holds twenty-four polycarbonate vials (#2241-PC). Sold in pairs.



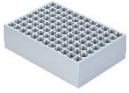
2663 Cryo-Block for 5 mL Polyethylene Vials

Aluminum block that holds twenty-four frosted polyethylene vials. Sold in pairs.



2664 Cryo-Block for 50 mL Centrifuge Tubes

Aluminum block that holds six standard conical-bottom 50 mL centrifuge tubes for cryogenic milling. Sold in pairs.



2665 Cryo-Block for Micro-centrifuge or PCR Tubes

Aluminum block that holds 96 standard (0.6 mL) micro-centrifuge tubes. Sold in pairs.



2666 Cryo-Block for 48 Micro-centrifuge or PCR Tubes

Aluminum block that holds 48 standard (1.5 - 2.0 mL) micro-centrifuge tubes. Sold in pairs.

VIAL AND TITER PLATE CAPACITY TABLE

	PART #	MiniG® CAPACITY	HOLDER	NUMBER OF LAYERS	STACKING TRAY	GENO/GRINDER® CAPACITY	HOLDER	NUMBER OF LAYERS	STACKING
Titer plate	Various	2	n/a	2	1690T	6	n/a	3	2189T
2 mL vial	Various	48	1680	2	1690T	96	2300	2	2189C
5 mL vial	2240-PC 2240-PEF	48	1681	2	1690T	96	2191	2	2189C
12 oz. (355 mL) jar	2248	2	n/a	1	n/a	4	2259	1	n/a
15 mL vial (short)	2250	10	n/a	2	1690T	24	2193	2	2189C
15 mL vial (tall)	2252-PC-30	12	1685	1	n/a	24	2197	1	n/a
50 mL vial (tall)	2253-PC-48	6	1686	1	n/a	16	2196- 16-PE	1	n/a
75 mL vial	2254	2	1688	1	n/a	6	2198	1	n/a
Cryovials	2255	n/a	n/a	1	n/a	6	2257	1	n/a
25 oz. (750 mL) jar	2258	n/a	n/a	1	n/a	2	2259	1	n/a

VIALS, JARS, AND TUBES REFERENCE TABLE

Vial Set	Vial Size	Grinding Balls	Foam Holder		Cryo-Block	
			GG	MiniG	GG	MiniG
2241-PC	5 mL	9.5 mm (2155)	2191	1681	2662	1665
2241-PEF-200	5 mL	9.5 mm (2155)	2191	1681	2663	1665
2251-PC	15 mL (short)	11 mm (2156)	2193	1687	2660	1668
2253-PC-48	50 mL	9.5 mm (2155) 11 mm (2156) 20 mm (2158)	2196-16-PE	1686	2664	1667
2252-PC-30	15 mL	9.5 mm (2155)	2197	1685	2661	1666
2248	12 oz Jar	11mm (2156)	2259	N/A	N/A	N/A
2254	75 mL Jar	12.7 mm (2157) 7.9 mm (5004B) 7.9 mm (5005B)	2198	1688	N/A	N/A
6133PC-T	12 mL	14 mm (6133B)	2198-24-PE	N/A	N/A	N/A
2258	25 oz Jar	11 mm (2156)	2259	N/A	N/A	N/A
2255	Cryogenic Vial	12.7 mm (2157)	2257	N/A	2260	2260
2300-500E, 2310, (Table A)	2 mL	3 mm (2151) 6.35 mm (2154) 6 mm (2186)	2300	1680	2666	1660

OPERATING LOAD RESTRICTIONS

To maintain proper functionality of the Geno/Grinder®, the maximum recommended total sample load in the clamp assembly is 4 lb. (1.8 kg). The total sample load includes sample, vials (or titer plates), grinding media, holders (or cryo-blocks), and nesting trays. For Sample loads exceeding 2.0 lb. (0.9 kg), the maximum recommended operating rate is 1500 rpm. Sample loads less than 2.0 lb. can be run at rates up to the maximum of 1750 rpm. Dynamic loads greater than 2 lb. can create a rate error. When stacking 4 or 6 titer plates, do not add more than five 4 mm steel balls to a single titer plate well.

Operating with loads that exceed the recommended maximum rate and weight limits can result in damage to the Geno/Grinder®. Therefore, warranty restrictions or invalidation may apply.

USING THE GENO/GRINDER® FOR BEAD BEATING

Bead beating is the preferred method to disrupt a variety of microorganisms and plant or animal tissues. In bead milling, grinding media such as steel or ceramic balls or glass beads are vigorously agitated inside a sealed vial or titer plate with the sample. The most commonly used grinding balls are steel ball bearings 4 mm in diameter. Disruption or cell lysis occurs as a result of the crushing action of the grinding media as they collide with the sample. Low shearing of nucleic acids can be achieved by varying the agitation speed of the mill. It is considered the method of choice for disruption of yeast and fungi and tough-to-disrupt cells such as bacteria and microalgae.

This method is one of the few that avoids cross-contamination between samples because both vials and grinding media are disposable. SPEX SamplePrep® offers a comprehensive range of grinding media, vials, jars and titer plates for ranging from 0.6 to 750 mL. The size and amount of the grinding media used is important. Speed and effectiveness of disruption can be increased dramatically by increasing the density, form and amount of grinding media in the sample vial or titer plate. Tough tissues may require precooling to embrittle the sample and this also serves to preserve any temperature-sensitive components such as RNA or Proteins. SPEX SamplePrep® offers a full range of cryogenic Kryo-Tech® accessories for this purpose. The loading of the beads should always allow adequate movement inside the sample vials but can be up to 80% of the total sample volume, provided there is still adequate agitation

PROTOCOLS



BEFORE



AFTER

SPELT SEEDS BEAD BEATING

Insert one seed and one grinding ball in each well of the deep well titer plate.

Grinding Balls = 4 mm

Rate = 1,400 RPM

Time = 1 minute



BEFORE



AFTER

CANNABIS

Place two grinding balls into a 50 mL centrifuge tube.

Grinding Balls = 11 mm

Rate = 1,500 RPM

Time = 1-2 minutes



BEFORE



AFTER

RICE

Dispense one steel bead into each well of the deep well titer plate.